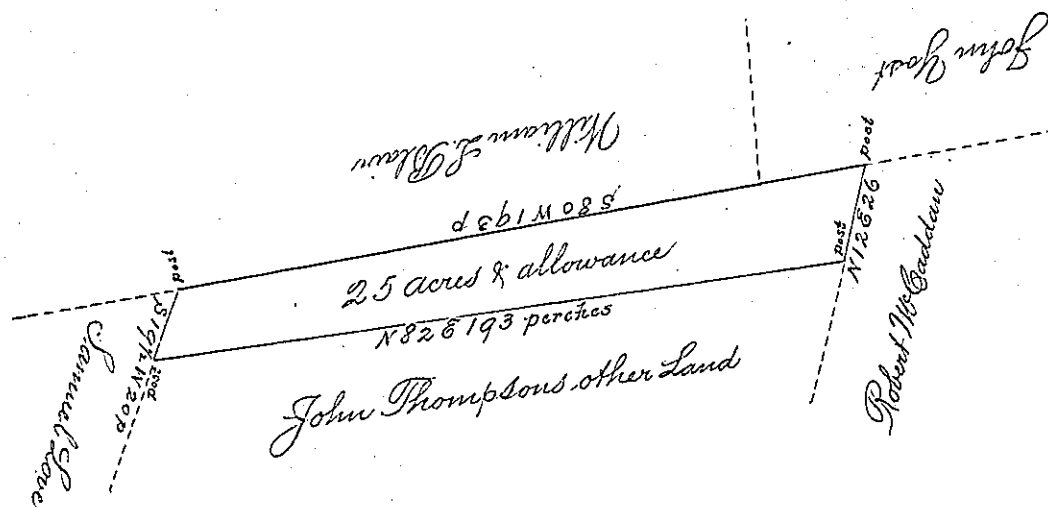


Field notes John Thompson. Begins at a post a corner of Samuel Lovis land & by the same S 19 1/2 W 20 p a post a corner of John Thompsons other land & by the same N 82 E 19 3 p to a post on the line of Robert McCaddens land & by the same N 12 E 26 p to a post on the line of John Goshland & by the same S 80 W 19 3 p to the beginning.



By Virtue of a Warrant Dated the third day of April A. D. 1792 the above described Tract of land was Surveyed for John Thompson situated in Londonderry township Containing twenty five acres with the allowance of six p Cent for Roads &c
Surveyed May 28th 1792 by

Saml Cochran D.S.

Note part of the above Tract of Land has been cleared at least twenty years but no buildings or improvements of that kind appear to have been ever made upon it

Saml Cochran D.S.

Daniel Brodhead Esq. S. G.

IN TESTIMONY that the above is a copy of the original remaining on file in the Department of Internal Affairs of Pennsylvania, made conformably to an Act of Assembly approved the 16th day of February, 1833, I have hereunto set my Hand and caused the Seal of said Department to be affixed at Harrisburg, this first day of October 1891.

James W. Pitta
Secretary of Internal Affairs.